



Riddari  
LOPIDESIGN.IS





# Riddari

for kids in Fjallalopi

## Sizes

	104	116	128	140	152 cm
Chest:	73	76	80	84	87 cm
Length to underarm:	24	27	30	33	36 cm
Sleeve length to underarm:	28	31	34	37	40 cm

## Materials

### grey

	104	116	128	140	152 cm
A 3056 grey sky	3	3	3	4	4
B 3059 raven black	1	2	2	2	2
C 3051 lily white	1	1	1	1	1
D 3054 frost grey	1	1	1	1	1

### yellow

	104	116	128	140	152 cm
A 3040 summer yellow	3	3	3	4	4
B 3051 lily white	1	2	2	2	2
C 3024 glacier sand	1	1	1	1	1
D 3071 misty rose	1	1	1	1	1

Circular needles 3.5 mm (US 4) 40 and 60-80 cm

Circular needles 3 mm (US 3) 40 and 60-80 cm

Double pointed needles 3 mm and 3.5 mm

## Gauge

22 stitches and 29 rows = 10 x 10 cm in St st using 3.5 mm needles.

Check gauge and adjust needle size if necessary.

## Note

Body and sleeves are worked in the round from lower edge to underarms, then joined to work yoke in the round. Round begins at the left side of body. On yoke, round begins on the left side of back at the joining of body and sleeve.

## Body

Cast on 160, 168, 176, 184, 192 stitches with color A using 3 mm circular needle. Join in the round and knit 5 rounds. Change to color B and knit 1 round. Work rib: \*knit 1, purl 1\*, repeat from \*-\* for 2 cm. Change to 3.5 mm circular needle and knit pattern from **chart 1**. Continue with color A until body measures 24, 27, 30, 33, 36 cm. Do not work last 5, 5, 5, 6, 6 stitches of round. Set aside and work sleeves.

## Sleeves

Cast on 40, 42, 44, 46, 48 stitches with color A using 3 mm double pointed needles. Join in the round and knit 5 rounds. Change to color B and knit 1 round. Work rib: \*knit 1, purl 1\*, for 2 cm. Change to 3.5 mm double pointed needles and knit pattern from **chart 1**, increase in first round evenly spaced 4, 2, 4, 2, 4 stitches => 44, 44, 48, 48, 52 stitches. Continue with color A and increase 1 stitch after first stitch and 1 stitch before last stitch of round, then in every 7th, 7th, 8th, 8th, 9th round, total 7, 8, 8, 9, 8 times => 58, 60, 64, 66, 68 stitches. Work until sleeve measures 28, 31, 34, 37, 40 cm. Place 9, 10, 10, 11, 12 stitches

at the end and the beginning of round on stitch holder => 49, 50, 54, 55, 56 stitches.

Work second sleeve.

## Yoke

Join body and sleeves with color A using 3.5 mm circular needle. Place last 5, 5, 5, 6, 6 stitches and first 4, 5, 5, 5, 6 stitches of body on stitch holder for underarm. Knit first sleeve 49, 50, 54, 55, 56 stitches. Knit 71, 74, 78, 81, 84 stitches for front. Place next 9, 10, 10, 11, 12 stitches of body on stitch holder for underarm. Knit second sleeve 49, 50, 54, 55, 56 stitches. Knit 71, 74, 78, 81, 84 stitches for back => 240, 248, 264, 272, 280 stitches. Work pattern and decreases as indicated from **chart 2**. Change to shorter needle when necessary. When chart is complete 90, 93, 99, 102, 105 stitches.

## Neckband

Change to 3 mm needles and continue with color B. Knit 1 round and decrease evenly space 12, 13, 17, 18, 19 stitches => 78, 80, 82, 84, 86 stitches. Work rib: \*knit 1, purl 1\*, for 2 cm. Change to color A and knit 6 rounds. Bind off loosely.

## Finishing

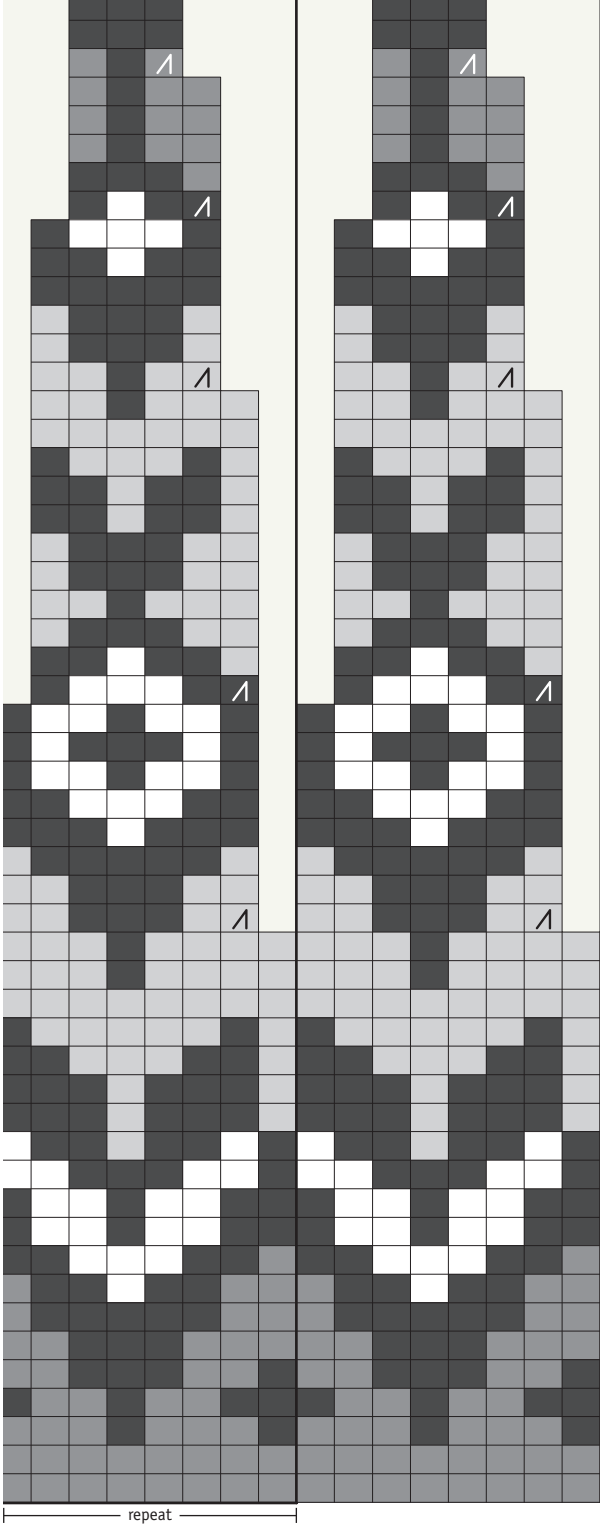
Graft underarm stitches together and weave in loose ends.

Rinse sweater by hand in lukewarm water and lay flat to dry in right measurements. Let the knit stitch edge at body, sleeves and neck roll up.

Design: Védís Jónsdóttir

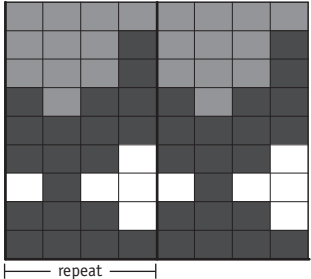


Chart 2 - yoke



53 skip rnd size 104, 116, 128  
52  
51 rnd 90, 93, 99, 102, 105 sts  
50 skip rnd size 104, 116, 128, 140  
49  
48  
47  
46 rnd 120, 124, 132, 136, 140 sts  
45  
44  
43  
42 skip rnd size 104, 116  
41  
40 rnd 150, 155, 165, 170, 175 sts  
39  
38 skip rnd size 104, 116  
37  
36  
35  
34 skip rnd size 104, 116, 128, 140  
33  
32  
31  
30  
29 rnd 180, 186, 198, 204, 210 sts  
28  
27  
26  
25  
24  
23  
22 skip rnd size 104  
21 rnd 210, 217, 231, 238, 245 sts  
20  
19  
18 skip rnd size 104, 116  
17  
16  
15 skip rnd size 104  
14  
13  
12  
11  
10  
9  
8  
7  
6  
5  
4  
3  
2 skip rnd size 104, 116, 128  
1 rnd 240, 248, 264, 272, 280 sts

Chart 1 body and sleeves



9  
8  
7  
6  
5  
4  
3  
2  
1 rnd body 160, 168, 176, 184, 192 sts  
sleeves 44, 44, 48, 48, 52 sts

Key

- grey / yellow
- = A 3056 / 3040
- = B 3059 / 3051
- = C 3051 / 3024
- = D 3054 / 3071
- = knit 2 sts together
- = no stitch













ÍSTEX

Völuteigur 6, IS-270 Mosfellsbær, Iceland  
Tel. +354 566 6300, [www.istex.is](http://www.istex.is), [istex@istex.is](mailto:istex@istex.is)